

CORY LAKE ISLES GYM & MULTIPURPOSE ROOM - OPTION 1



Image source: Google Maps



PROJECT: Cory Lake Gym Option 1
T a m p a , F L 3 3 6 4 7

Building Area Heated: 4,200 square feet @ 14' ceiling height.
Porch Area: 225 square feet @ 14' ceiling height.
TOTAL UNDER ROOF: 4,450 SQUARE FEET

100 ARCHITECTURE
Included
Drawings sealed by a Florida Registered Engineer

120 PERMITTING & INSPECTIONS
Included
City of Tampa

130 IMPACT FEES (MOBILITY FEES)
Included

140 SURVEY
Included
Foundation tie in survey & final survey included.
Excluded
Site survey.

150 REPRODUCTION
Included
Production drawings.

160 TEMPORARY POWER & WATER
Included
Temporary water and power included. Up to 100' away.

170 TEMPORARY TOILET
Included
Portable sanitation included.

180 TRASH REMOVAL
Included
Dumpster on site included.

190 CLEANING (FINAL)
Included
Constructed building interior cleaned ready to move in.

200 COMPACTION TEST
Included

210 TERMITE TREATMENT
Included
Termite/ pest treatment prior to slab pour.

220 CLEARING, FILL MATERIAL & LABOR, FINAL GRADE
Included
Scrape lot where required.
Silt fence barrier around construction area as required.
Fill as required for concrete slab.
Rough grade and final grade.

230 WATER
Included
Up to 40' water line connection included. Additional charged at \$4.00/l.f.
2 hose bibs included.

240 SEWER
Included
Up to 40' sewer line connection included. Additional charged at \$14.00/l.f.

250 GAS
Excluded

260 SLAB LABOR & MATERIAL
Included as per plans
Monolithic slab foundation.
One story footings.
Slab 4" thick with 3000 PSI fiber mixed concrete, with visqueen

270 SIP WALLS MATERIALS & LABOR
Included as per plans
6" Metal structurally insulated panels for exterior walls.

280 FRAMING LABOR & MATERIALS
Included per plans
4" Steel interior framing @ 24" O.C.
Roof framing standard wooden trusses.
Roof sheathing is 1/2" O.S.B (for tiles).
Specialties (niches, tray ceilings & arches)

300 EXTERIOR TRIMS
Included per plans
Porch columns (2) and beams with stucco finish.
Exterior foam and trim work allowance \$7500.

310 SOFFIT & PORCH CEILINGS
Included per plans

320 STUCCO FINISH
Included per plans
7/8" thick stucco finish with wire mesh.

330 STONE OR BRICK
Excluded

340 ROOFING
Included per plans
Tile roof to match existing Cory Lake clubhouse.

350 WINDOWS
Included per plans
White Vinyl, single hung, double pane, 366 Low-E glass.
Tilt or removable sash for easy cleaning. (Not fixed windows)

360 EXTERIOR DOORS
Included Per Plan
Kwikset hardware and deadbolts for every exterior door.
Standard front door 2'-2'-8"x8'-0" doors with transom on top.

370 INTERIOR DOORS
Included Per Plan
Standard single 3'x6'-8" 6 panel square top.
(2) Standard french door 2'-8"x6'-8" 6 panel square top. (No glass)

380 PLUMBING & PLUMBING FIXTURES
Included Per Plan
Men's locker room plumbing.
Women's locker room plumbing.
Standard fixtures provided (chrome finish)

390 MECHANICAL
Included Per Plan
1 - Standard HVAC Unit as per Energy Calculations (included).
Supply and returns placed as per plans.
Locker room exhaust placed as per plans.

400 ELECTRICAL
Included Per Plan

GFCI outlets in wet and outdoor locations per plans.
Light fixtures placed per plans.
Outlets & switches placed per plans.

410 LIGHTING FIXTURES & FANS (& FAN MOUNTING)
As per plans
(Recess cans to be of CFL bulbs all included in electrical section.)

420 FIREPLACE
Excluded

430 INSULATION
Included
5.5" Spray foam insulation at roof deck as per plans.
SIP Walls insulated.

440 DRYWALL
Included
Walls to have 1/2" drywall
Knockdown ceilings.
Orange peel walls.
Square corner beads at windows and wall corners.

450 BATHROOM CABINETS & COUNTERTOPS
3cm granite top to be selected from KB Factory Outlet.
Plywood base and solid wood doors for outside cabinetry to be chosen from 6 different options.

460 INTERIOR TRIM
5 1/4" crown moulding as per plans.
5 1/4" base trim as per plans.
Vinyl base time in gym area if needed.
Tiles on wall. 480 s.f. installed.

470 MIRRORS
Included

480 PAINTING & STAINING
Included
Interior spray and back roll.
Exterior spray and back roll.
Primer + 2 coats interior and exterior.
1 - Color interior walls

White color ceilings, doors and trims.

490 TILE FLOORS
Included
1,240 s.f. of tile flooring at entry and locker rooms.

500 PADDED GYM FLOORING
Included
3,000 s.f. of padded flooring at gym & multi purpose room.

520 PAVERS
Included
Pavers installed at front porch.

530 APPLIANCES
Excluded

540 SHELVING
Included
Shelving in areas as needed.

580 SCREENING
Excluded

590 LOW VOLTAGE
Included
Structured low voltage panel box.
2 data drops
3 tv drops
2 phone drops

600 WALKS & SIDEWALK
Included

610 SOD, LANDSCAPING & SPRINKLERS
Included
Landscape design to be done after options are selected.
\$5000.00 allowance.

620 PROJECT SUPERVISION
Included

OPTION 1
TOTAL CONSTRUCTION COST: \$667,742.36

DESIGN BY:
KHP
KHPDEVELOPERS
CGC # 1523047
P: 813-421-5678
F: 813-333-7296
kp@khpdevelopers.com
www.khp homes.com

THESE DRAWINGS ARE THE PROPRIETARY WORK PRODUCT AND PROPERTY OF KHP DEVELOPERS INC. DEVELOPED FOR THE EXCLUSIVE USE OF KHP DEVELOPERS INC. USE OF THESE DRAWINGS AND CONCEPTS CONTAINED THEREIN WITHOUT WRITTEN PERMISSION IS PROHIBITED. PROTECTED COPYRIGHT 2017 KHP DEVELOPERS INC.

ENGINEERED BY:

CORY LAKE ISLES GYM & MULTI-PURPOSE ROOM
3 DIFFERENT LAYOUT OPTIONS
CORY LAKE ISLES, HILLSBOROUGH COUNTY, FLORIDA

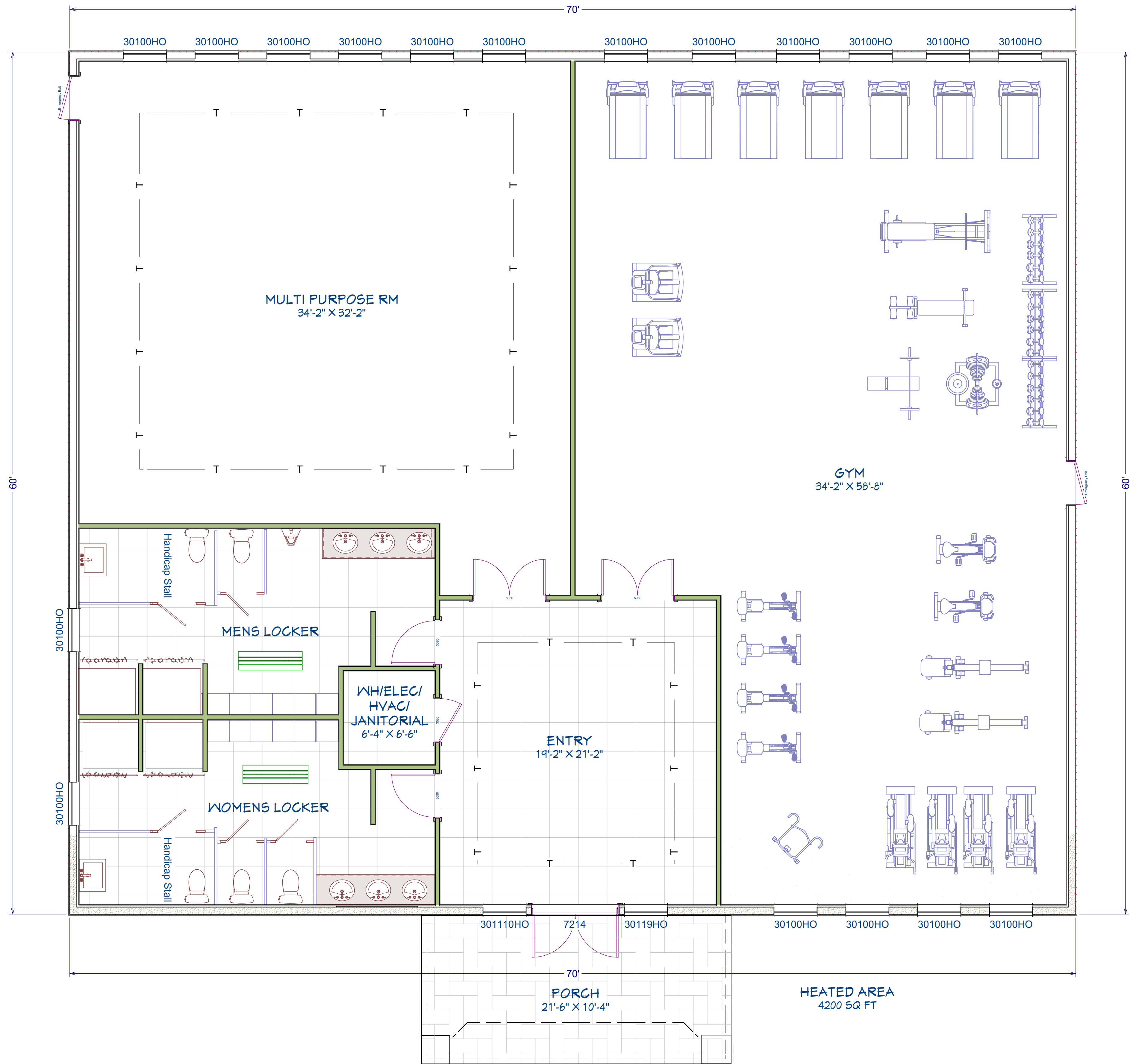
DRAWN BY: DCB

DATE: 04/06/2017

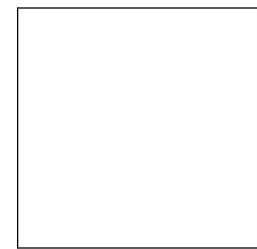
SCALE: N.T.S.

PAGE NUMBER:

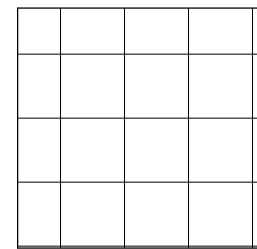
A-1



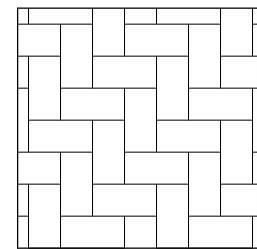
FLOORING LEGEND



GYM RUBBER TILES



24"X24" PORCELAIN TILE



PAVERS

Option 1 Floor Plan

DESIGN BY:



THESE DRAWINGS ARE THE PROPRIETARY WORK PRODUCT AND PROPERTY OF KHP DEVELOPERS INC. DEVELOPED FOR THE EXCLUSIVE USE OF KHP DEVELOPERS INC. USE OF THESE DRAWINGS AND CONCEPTS CONTAINED THEREIN WITHOUT WRITTEN PERMISSION IS PROHIBITED. PROTECTED COPYRIGHT 2017 KHP DEVELOPERS INC.

ENGINEERED BY:

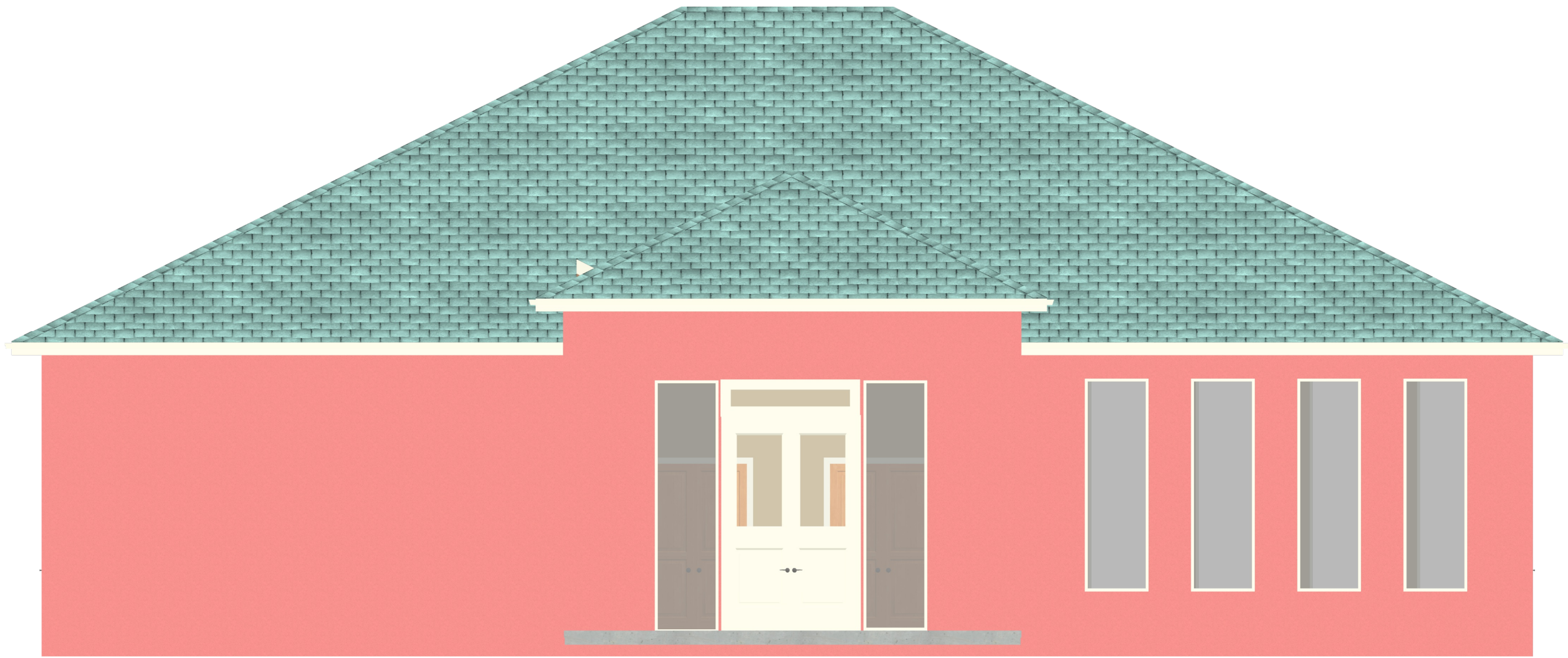
CORY LAKE ISLES GYM & MULTI-PURPOSE ROOM
3 DIFFERENT LAYOUT OPTIONS
CORY LAKE ISLES, HILLSBOROUGH COUNTY, FLORIDA

DRAWN BY: DCB

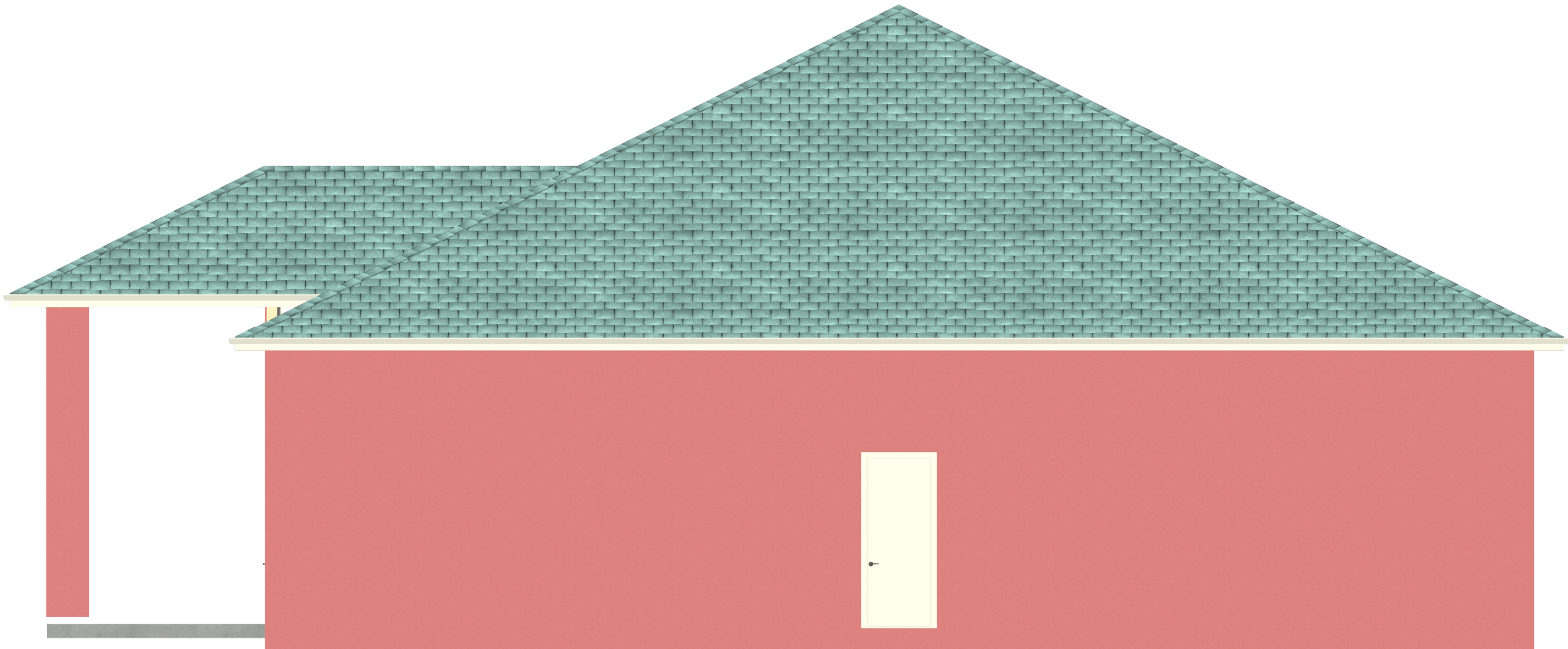
DATE: 04/06/2017

SCALE: N.T.S.

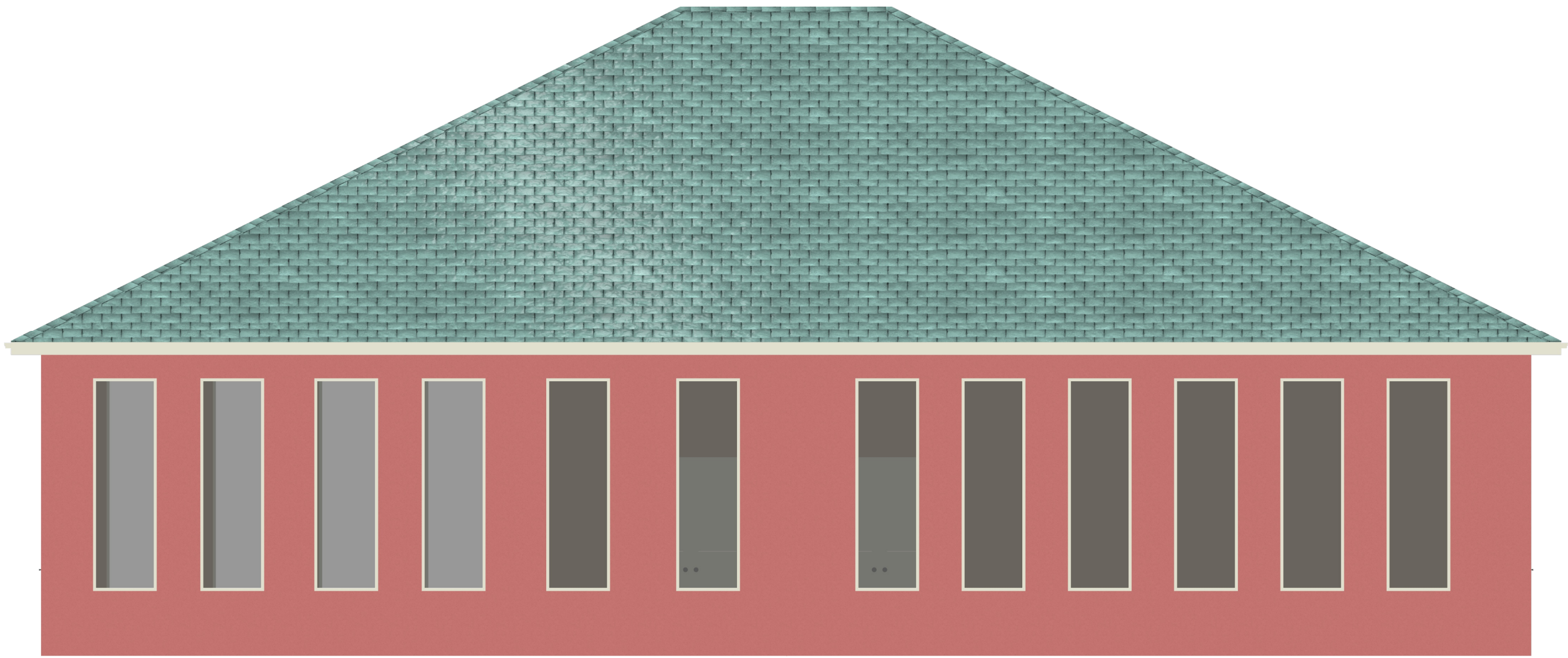
PAGE NUMBER:



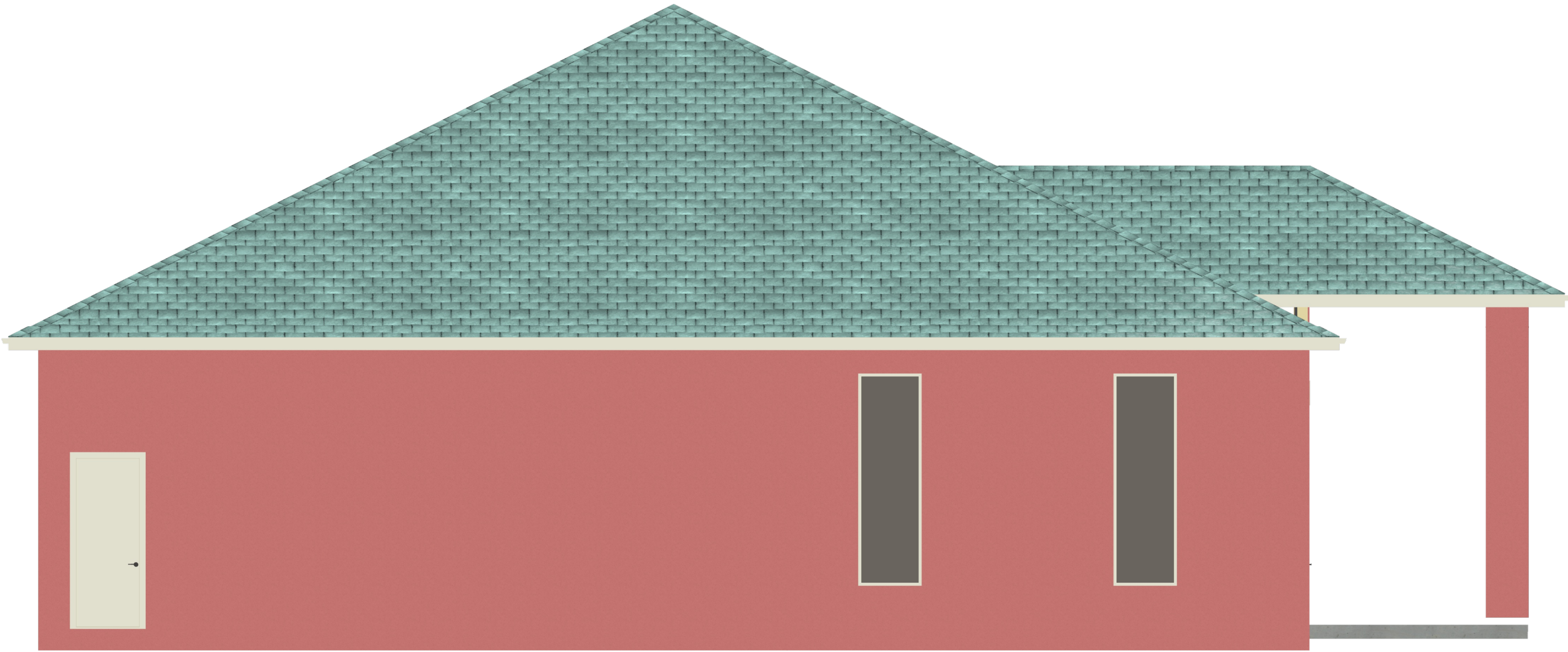
Option #1 Front Elevation



Option #1 Right Side Elevation



Option #1 Rear Elevation



Option #1 Left Side Elevation

CORY LAKE ISLES GYM & MULTIPURPOSE ROOM - OPTION 2



PROJECT: Cory Lake Gym Option 2
T a m p a , F L 3 3 6 4 7

Building Area (Heated) = 4,806 square feet @ 14' ceilings.
Basketball Area (Heated) = 6,166 square feet @ 22' ceilings.
Porch Area: 245 square feet
TOTAL UNDER ROOF: 11,217 SQUARE FEET

100 ARCHITECTURE
Included
Drawings sealed by a Florida Registered Engineer.

120 PERMITTING & INSPECTIONS
Included
City of Tampa

130 IMPACT FEES (MOBILITY FEES)
Included

140 SURVEY
Included
Foundation & Final survey included

150 REPRODUCTION
Included
Production drawings

160 TEMPORARY POWER & WATER
Included
Temporary water and power included within 100'.

170 TEMPORARY TOILET
Included
Portable sanitation included.

180 TRASH REMOVAL
Included
Dumpster on site included.

190 CLEANING (FINAL)
Included
Constructed building interior cleaned ready to move in.

200 COMPACTION TEST
Included

210 TERMITE TREATMENT
Included
Termite/ pest treatment prior to slab pour.

220 CLEANING, FILL MATERIAL & LABOR, FINAL GRADE
Included
Scrape lot where required.
Silt fence barrier around construction area as required.
Fill as required for concrete slab.
Rough grade and final grade.

230 WATER
Included
Upto 40' water line connection included. Additional charged at \$4.00/l.f.
2 hose bibs included.

240 SEWER
Included
Upto 40' sewer line connection included. Additional charged at \$14.00/l.f.

250 GAS
Excluded

260 SLAB LABOR & MATERIAL
Included as per plans
Monolithic slab foundation.
One story footings, two story footings at basketball area.
Slab 4" thick with 3000 PSI fiber mixed concrete, with visqueen

270 SIP WALLS MATERIALS & LABOR
Included as per plans
6" Metal structurally insulated panels for exterior walls.

280 FRAMING LABOR & MATERIALS
Included per plans
4" Steel Interior framing @ 24" O.C.
Roof framing standard wooden trusses.
Roof sheathing is 1/2" O.S.B. (for ties).
Specialties (niches, tray ceilings & arches)

300 EXTERIOR TRIMS
Included per plans
Porch columns (2) and beams with stucco finish.
Exterior foam and trim work allowance \$7500.

310 SOFFIT & PORCH CEILINGS
Included per plans
GFCI outlets in wet and outdoor locations per plans.
Light fixtures placed per plans.
Outlets & switches placed per plans.

320 STUCCO FINISH
Included per plans
7/8" thick stucco finish with wire mesh.

330 STONE OR BRICK
Excluded

340 ROOFING
Included per plans
Tile roof to match existing Cory Lake clubhouse.

350 WINDOWS
Included per plans
White Vinyl, single hung, double pane, 366 Low-E glass.
Tilt or removable sash for easy cleaning. (Not fixed windows)

360 EXTERIOR DOORS
Included Per Plan
Kwikset hardware and deadbolts for every exterior door.
Standard front door 2'-2"-8"x8'-0" doors with transom on top.

370 INTERIOR DOORS
Included Per Plan
Standard single 3'x6'-8" 6 panel square top.
(3) Standard french door 2'-8"x6'-8" 6 panel square top.
(No glass)

380 PLUMBING & PLUMBING FIXTURES
Included Per Plan
Men's locker room plumbing.
Women's locker room plumbing.
Standard fixtures provided (chrome finish)

390 MECHANICAL
Included Per Plan
Standard HVAC Unit as per Energy Calculations (included).
Supply and returns placed as per plans.
Locker room exhaust placed as per plans.

400 ELECTRICAL
Included Per Plan

410 LIGHTING FIXTURES & FANS (& FAN MOUNTING)
As Per Plan
(Recess cans to be of CFL bulbs all included in electrical section.)

420 FIREPLACE
Excluded

430 INSULATION
Included
5.5" Spray foam insulation at roof deck as per plans.
SIP Walls insulated.

440 DRYWALL
Included
Walls to have 1/2" drywall
Knockdown ceilings.
Orange peel walls.
Square corner beads at windows and wall corners.

450 BATHROOM CABINETS & COUNTERTOPS
3cm granite top to be selected from Level 3.
Plywood base and solid wood doors for outside cabinetry to be chosen from 6 different options.

460 INTERIOR TRIM
As per plan
5 1/4" crown moulding as per plans.
5 1/4" base trim as per plans.
Vinyl base time in gym area if needed.
Tiles on wall. 480 s.f. installed.

470 MIRRORS
Included

480 PAINTING & STAINING
Included
Interior spray and back roll.
Exterior spray and back roll. To match existing clubhouse.
Primer + 2 coats interior and exterior.
1 - Color interior walls
White color ceilings, doors and trims.

490 TILE FLOORS
Included
1,267 s.f. of tile flooring at entry and locker rooms.

500 PADDED GYM FLOORING
Included
3,519 s.f. of padded flooring at gym & multi purpose room.

510 BASKETBALL COURT FLOORING
Indoor basketball court flooring ReV tiles w/ 2mm rubber underlayment. Volleyball and basketball lined.
2 wall mount hoops with 6'-9" overhang.
1 in ground volleyball system.

520 PAVERS
Included
245 s.f. pavers installed at front porch.

530 APPLIANCES
Excluded

540 SHELVING
Included
Shelving in areas as needed.

580 SCREENING
Excluded

590 LOW VOLTAGE
Included
Structured low voltage panel box.
2 data drops
3 tv drops
2 phone drops

600 WALKS & SIDEWALK
Included

610 SOD, LANDSCAPING & SPRINKLERS
Included
Landscape design to be done after options are selected.
\$5000.00 allowance.

620 PROJECT SUPERVISION

OPTION 2
TOTAL CONSTRUCTION COST: \$1,196,649.64

DESIGN BY:
KHP
KHPDEVELOPERS
CGC # 1523047
P: 813-421-5678
F: 813-333-7296
kp@khpdevelopers.com
www.khphomes.com

THESE DRAWINGS ARE THE PROPRIETARY WORK PRODUCT AND PROPERTY OF KHP DEVELOPERS INC. DEVELOPED FOR THE EXCLUSIVE USE OF KHP DEVELOPERS INC. USE OF THESE DRAWINGS AND CONCEPTS CONTAINED THEREIN WITHOUT WRITTEN PERMISSION IS PROHIBITED. PROTECTED COPYRIGHT 2017 KHP DEVELOPERS INC.

ENGINEERED BY:

CORY LAKE ISLES GYM & MULTI-PURPOSE ROOM
3 DIFFERENT LAYOUT OPTIONS
CORY LAKE ISLES, HILLSBOROUGH COUNTY, FLORIDA

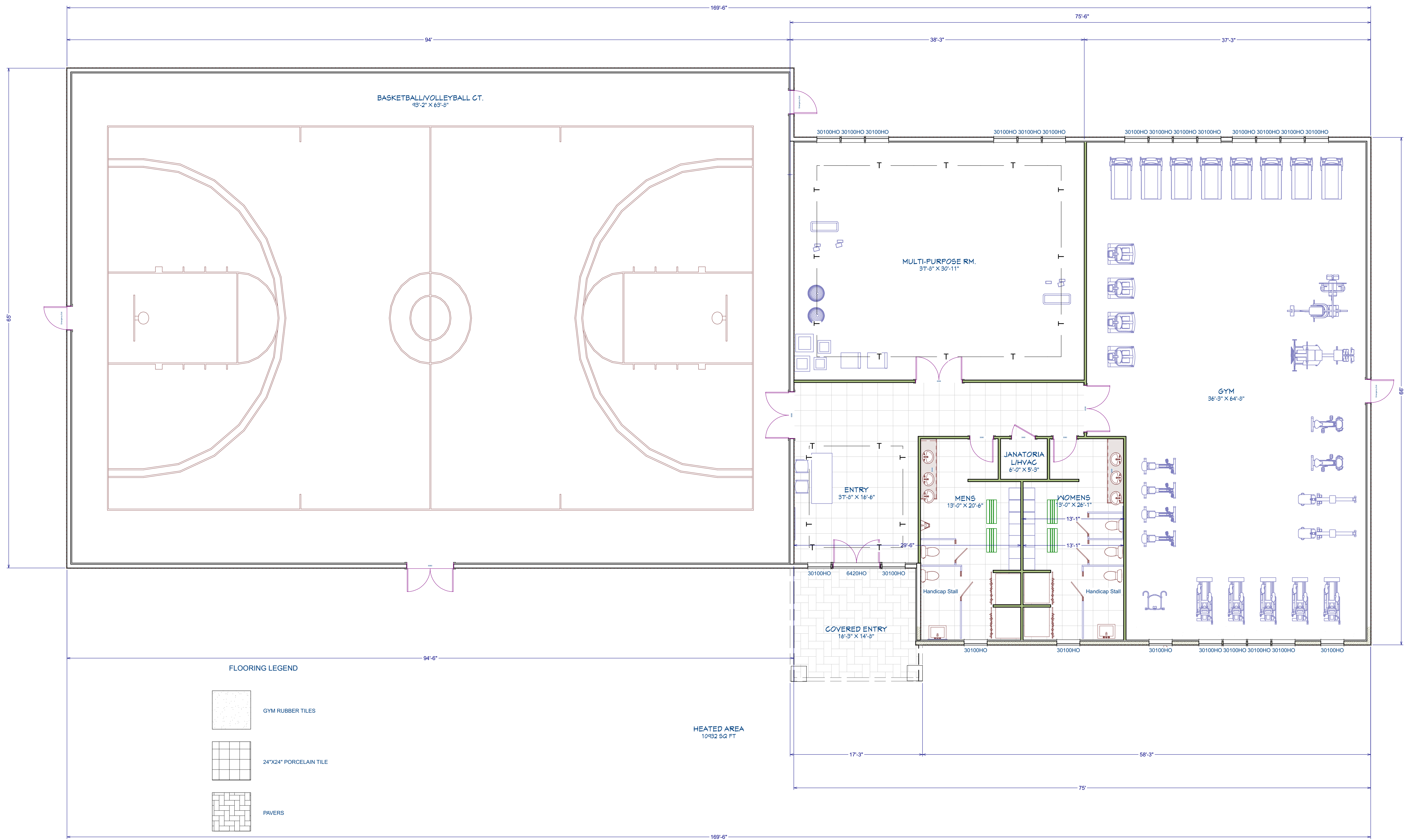
DRAWN BY: DCB

DATE: 04/06/2017

SCALE: N.T.S.

PAGE NUMBER:

A-4



Option 2 Floor Plan

DESIGN BY:



KHPDEVELOPERS

CGC # 1523047

P: 813-421-5678

F: 813-333-7296

kp@khpdevelopers.com

www.khphomes.com

THESE DRAWINGS ARE THE PROPRIETARY WORK PRODUCT AND PROPERTY OF KHP DEVELOPERS INC. DEVELOPED FOR THE EXCLUSIVE USE OF KHP DEVELOPERS INC. USE OF THESE DRAWINGS AND CONCEPTS CONTAINED THEREIN WITHOUT WRITTEN PERMISSION IS PROHIBITED. PROTECTED COPYRIGHT 2017 KHP DEVELOPERS INC.

ENGINEERED BY:

CORY LAKE ISLES GYM & MULTI-PURPOSE ROOM

3 DIFFERENT LAYOUT OPTIONS

CORY LAKE ISLES, HILLSBOROUGH COUNTY, FLORIDA

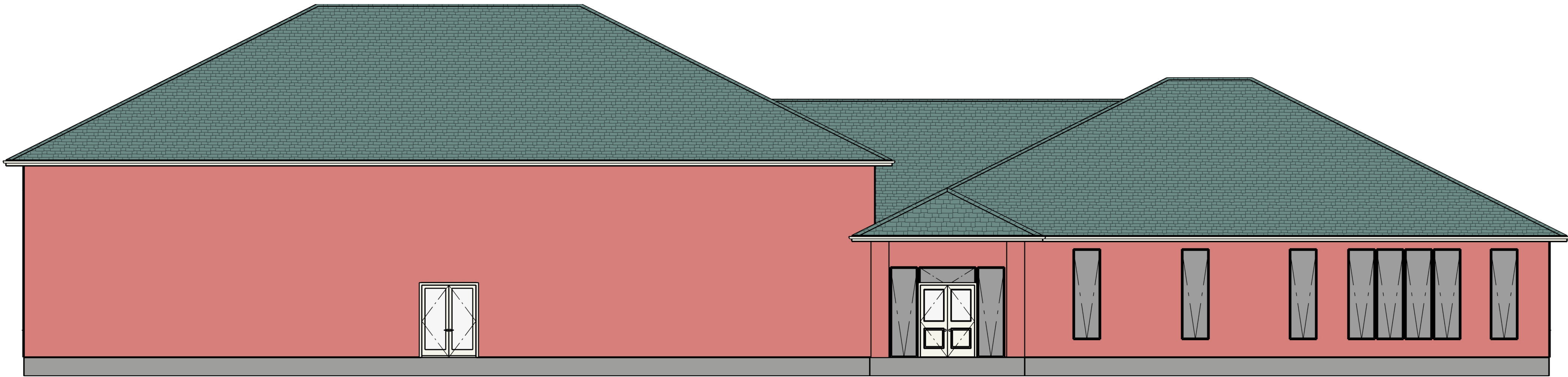
DRAWN BY: DCB

DATE: 04/06/2017

SCALE: N.T.S.

PAGE NUMBER:

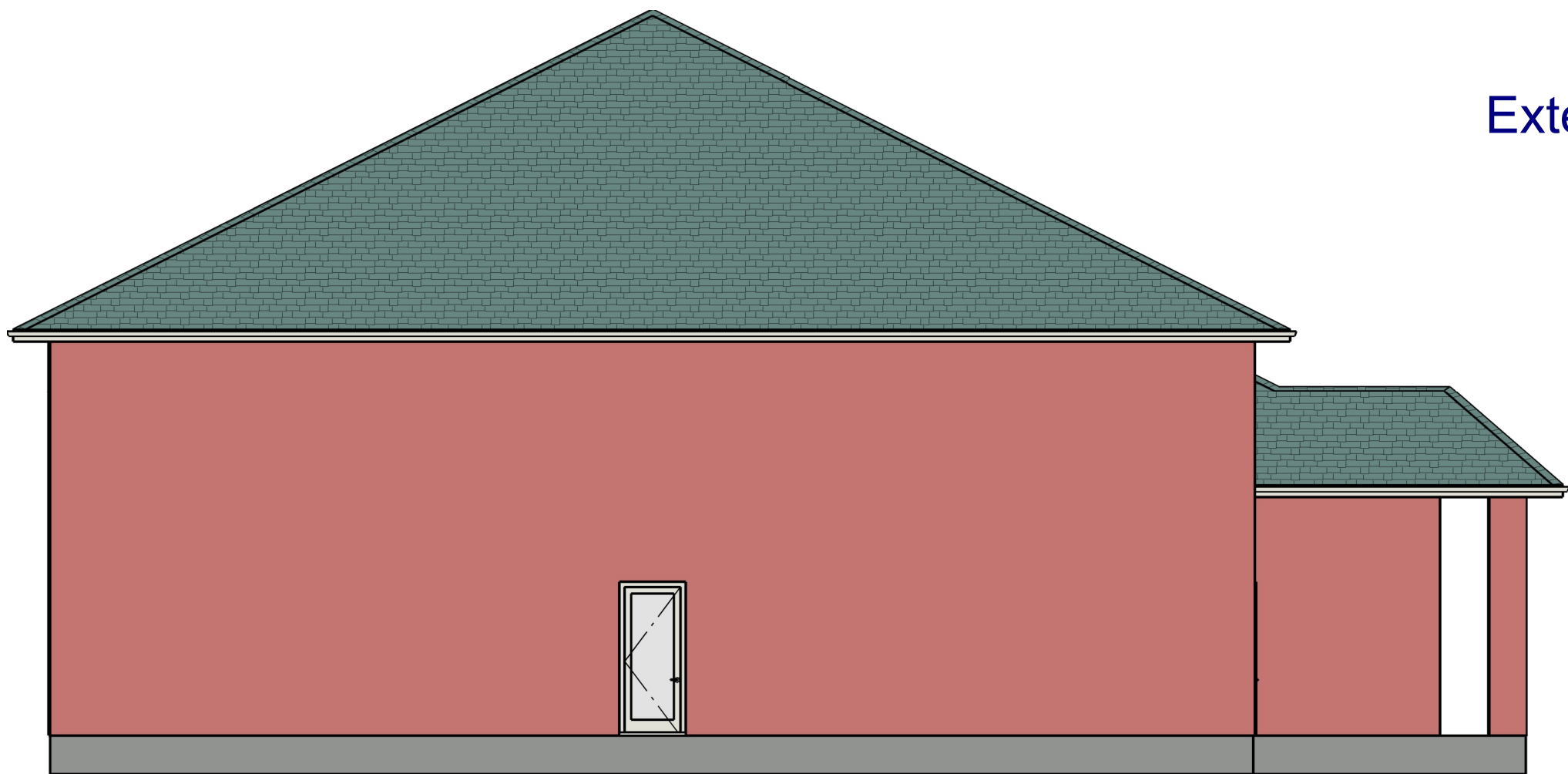
A-5



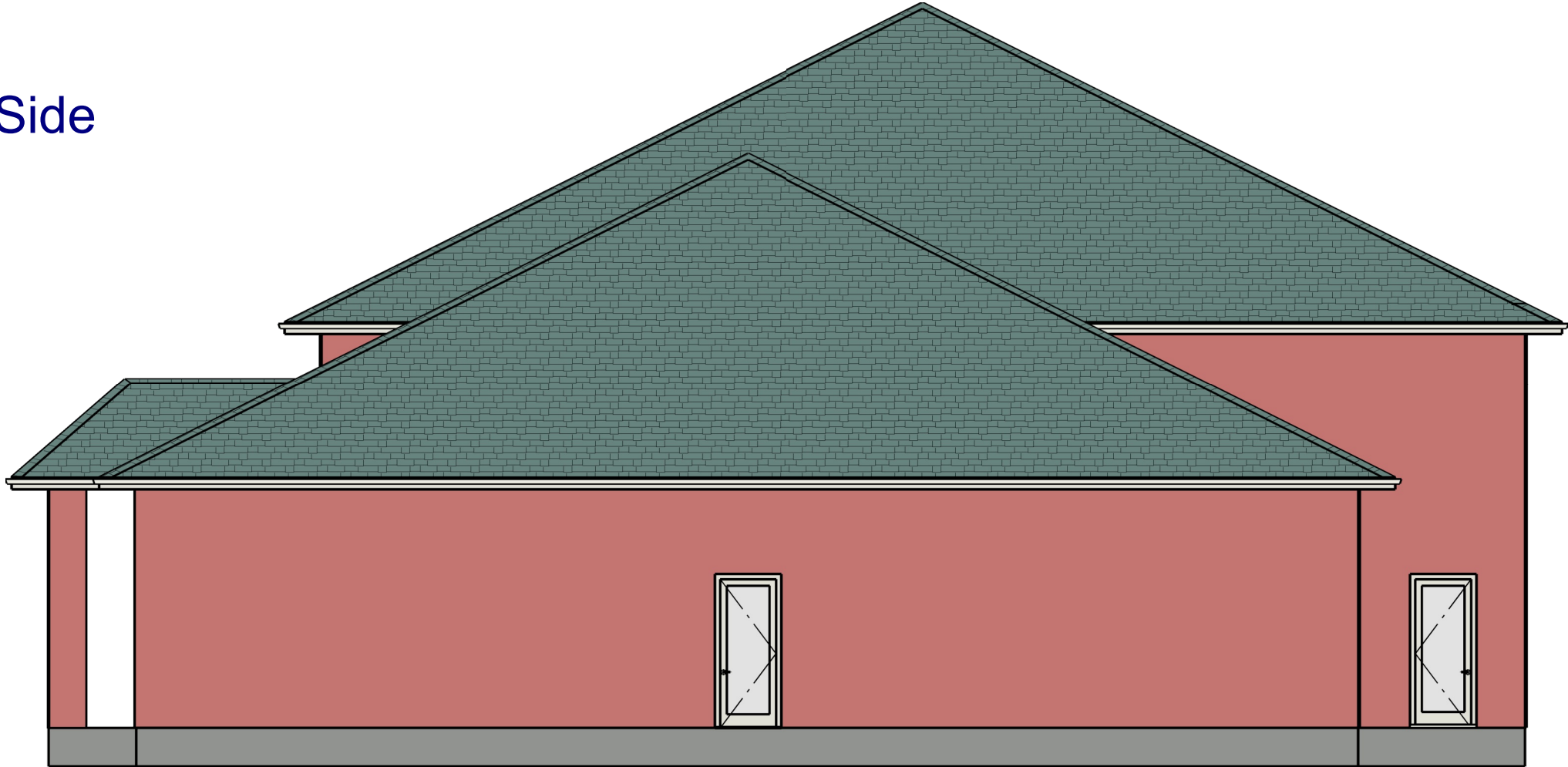
Exterior Elevation Front Side



Exterior Elevation Rear Side



Exterior Elevation Left Side



Exterior Elevation Right Side

DESIGN BY:

KHP
KHPDEVELOPERS
CGC # 1523047
P: 813-421-5678
F: 813-333-7296
kp@khpdevelopers.com
www.khphomes.com

THESE DRAWINGS ARE THE PROPRIETARY WORK PRODUCT AND PROPERTY OF KHP DEVELOPERS INC. DEVELOPED FOR THE EXCLUSIVE USE OF KHP DEVELOPERS INC. USE OF THESE DRAWINGS AND CONCEPTS CONTAINED THEREIN WITHOUT WRITTEN PERMISSION IS PROHIBITED. PROTECTED COPYRIGHT 2017 KHP DEVELOPERS INC.

ENGINEERED BY:

CORY LAKE ISLES GYM & MULTI-PURPOSE ROOM
3 DIFFERENT LAYOUT OPTIONS
CORY LAKE ISLES, HILLSBOROUGH COUNTY, FLORIDA

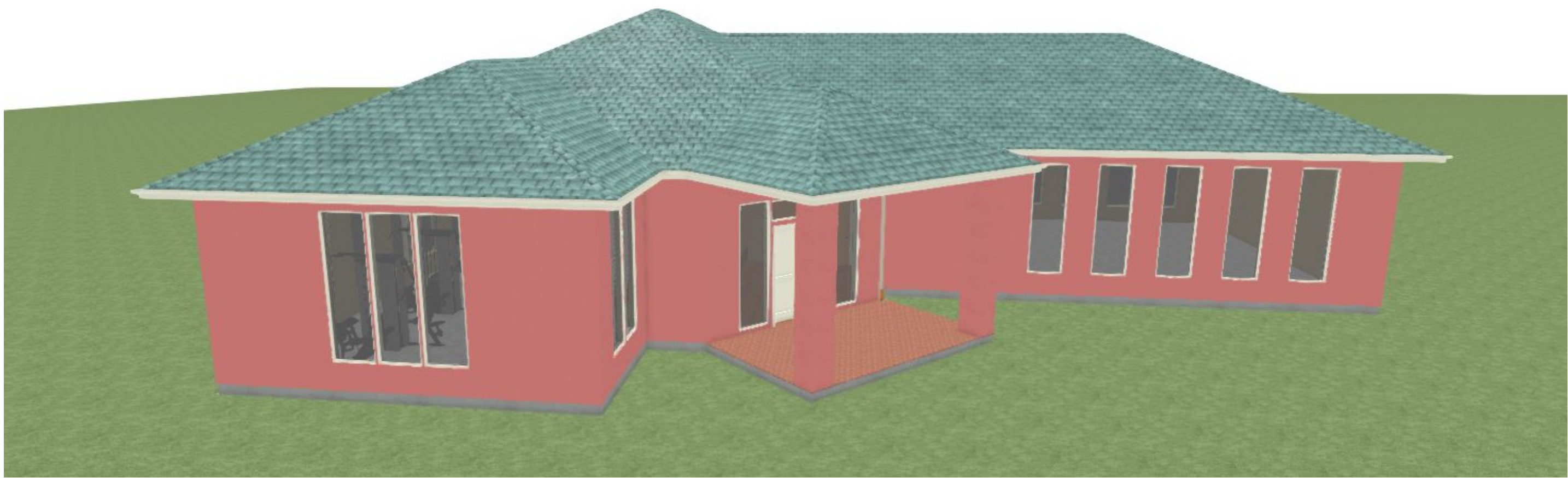
DRAWN BY: DCB

DATE: 04/06/2017

SCALE: N.T.S.

PAGE NUMBER:

CORY LAKE ISLES GYM & MULTIPURPOSE ROOM - OPTION 3



PROJECT: Cory Lake Gym Option 3
T a m p a , F L 3 3 6 4 7

Building Area Heated: 4,547 square feet @ 14' ceiling height.
Porch Area: 225 square feet @ 14' ceiling height.
TOTAL UNDER ROOF: 4,772 SQUARE FEET

100 ARCHITECTURE

Included
Drawings sealed by a Florida Registered Engineer

120 PERMITTING & INSPECTIONS

Included
City of Tampa

130 IMPACT FEES (MOBILITY FEES)

Included

140 SURVEY

Included
Foundation & Final survey included

150 REPRODUCTION

Included
Production drawings

160 TEMPORARY POWER & WATER

Included
Temporary water and power included within 100'.

170 TEMPORARY TOILET

Included
Portable sanitation included.

180 TRASH REMOVAL

Included
Dumpster on site included.

190 CLEANING (FINAL)

Included
Constructed building interior cleaned ready to move in.

200 COMPACTION TEST

Included

210 TERMITE TREATMENT

Included
Termite/ pest treatment prior to slab pour.

220 CLEARING, FILL MATERIAL & LABOR, FINAL GRADE

Included
Scrape lot where required.
Silt fence barrier around construction area as required.
Fill as required for concrete slab.
Rough grade and final grade.

230 WATER

Included
Upto 40' water line connection included. Additional charged at \$4.00/l.f.
2 hose bibs included.

240 SEWER

Included
Upto 40' sewer line connection included. Additional charged at \$14.00/l.f.

250 GAS

Excluded

260 SLAB LABOR & MATERIAL

Included as per plans
Monolithic slab foundation.
One story footings.
Slab 4" thick with 3000 PSI fiber mixed concrete, with visqueen

270 SIP WALLS MATERIALS & LABOR

Included as per plans
6" Metal structurally insulated panels for exterior walls.

280 FRAMING LABOR & MATERIALS

Included as per plans
4" Steel Interior framing @ 24" O.C.
Roof framing standard wooden trusses.
Roof sheathing is 1/2" O.S.B (for tiles)
Specialties (niches, tray ceilings & arches)

300 EXTERIOR TRIMS

Included as per plans
Porch columns (2) and beams with stucco finish.
Exterior foam and trim work allowance \$7500.

310 SOFFIT & PORCH CEILINGS

Included as per plans

320 STUCCO FINISH

Included as per plans
7/8" thick stucco finish with wire mesh.

330 STONE OR BRICK

Excluded

340 ROOFING

Included as per plans
Tile roof to match existing Cory Lake clubhouse.

350 WINDOWS

Included as per plans
White Vinyl, single hung, double pane, 366 Low-E glass.
Tilt or removable sash for easy cleaning. (Not fixed windows)

360 EXTERIOR DOORS

Included as per plans
Kwikset hardware and deadbolts for every exterior door.
Standard front door 2'-2"-8"x8'-0" doors with transom on top.

370 INTERIOR DOORS

Included as per plans
Standard single 3'x6'-8" 6 panel square top.
(2) Standard french door 2'-8"x6'-8" 6 panel square top. (No glass)

380 PLUMBING & PLUMBING FIXTURES

Included as per plans
Men's locker room plumbing.
Women's locker room plumbing.
Standard fixtures provided (chrome finish)

390 MECHANICAL

Included as per plans
1 - Standard HVAC Unit as per Energy Calculations (included).
Supply and returns placed as per plans.
Locker room exhaust placed as per plans.

400 ELECTRICAL

Included as per plans

GFC outlets in wet and outdoor locations per plans.
Light fixtures placed per plans.
Outlets & switches placed per plans.

410 LIGHTING FIXTURES & FANS (& FAN MOUNTING)

As per plans
(Recess cans to be of CFL bulbs all included in electrical section.)

420 FIREPLACE

Excluded

430 INSULATION

Included
5.5" Spray foam insulation at roof deck as per plans.
SIP Walls insulated.

440 DRYWALL

Included
Walls to have 1/2" drywall
Knockdown ceilings.
Orange peel walls.
Square corner beads at windows and wall corners.

450 BATHROOM CABINETS & COUNTERTOPS

3cm granite top to be selected from level 3.
Plywood base and solid wood doors for outside cabinetry to be chosen from 6 different options.

460 INTERIOR TRIM

5 1/4" crown moulding as per plans.
5 1/4" base trim as per plans.
Vinyl base time in gym area if needed.
Tiles on wall. 480 s.f. installed.

470 MIRRORS

Included

480 PAINTING & STAINING

Included
Interior spray and back roll.
Exterior spray and back roll.
Primer + 2 coats interior and exterior.
1 - Color interior walls

White color ceilings, doors and trims.

490 TILE FLOORS

Included
1,171 s.f. of tile flooring at entry and locker rooms.

500 PADDED GYM FLOORING

Included
3,396 s.f. of padded flooring at gym & multi purpose room.

520 PAVERS

Included
Pavers installed at front porch.

530 APPLIANCES

Excluded

540 SHELVING

Included
Shelving in areas as needed.

580 SCREENING

Excluded

590 LOW VOLTAGE

Included
Structured low voltage panel box.
2 data drops
3 tv drops
2 phone drops

600 WALKS & SIDEWALK

Included

610 SOD, LANDSCAPING & SPRINKLERS

Included
Landscape design to be done after options are selected.
\$5000.00 allowance.

620 PROJECT SUPERVISION

Included

OPTION 3
TOTAL CONSTRUCTION COST: \$683,757.78

DESIGN BY:



KHPDEVELOPERS

CGC # 1523047
P: 813-421-5678
F: 813-333-7296
kp@khpdevelopers.com
www.khphomes.com

THESE DRAWINGS ARE THE PROPRIETARY WORK PRODUCT AND PROPERTY OF KHP DEVELOPERS INC. DEVELOPED FOR THE EXCLUSIVE USE OF KHP DEVELOPERS INC. USE OF THESE DRAWINGS AND CONCEPTS CONTAINED THEREIN WITHOUT WRITTEN PERMISSION IS PROHIBITED. PROTECTED COPYRIGHT 2017 KHP DEVELOPERS INC.

ENGINEERED BY:

CORY LAKE ISLES GYM & MULTI-PURPOSE ROOM

3 DIFFERENT LAYOUT OPTIONS

CORY LAKE ISLES, HILLSBOROUGH COUNTY, FLORIDA

DRAWN BY: DCB

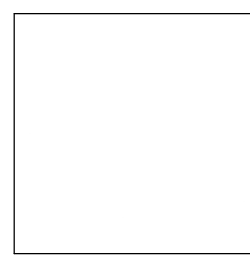
DATE: 04/06/2017

SCALE: N.T.S.

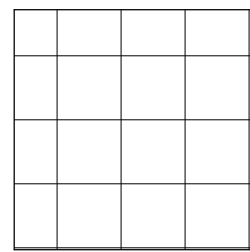
PAGE NUMBER:

A-7

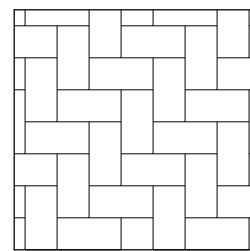
FLOORING LEGEND



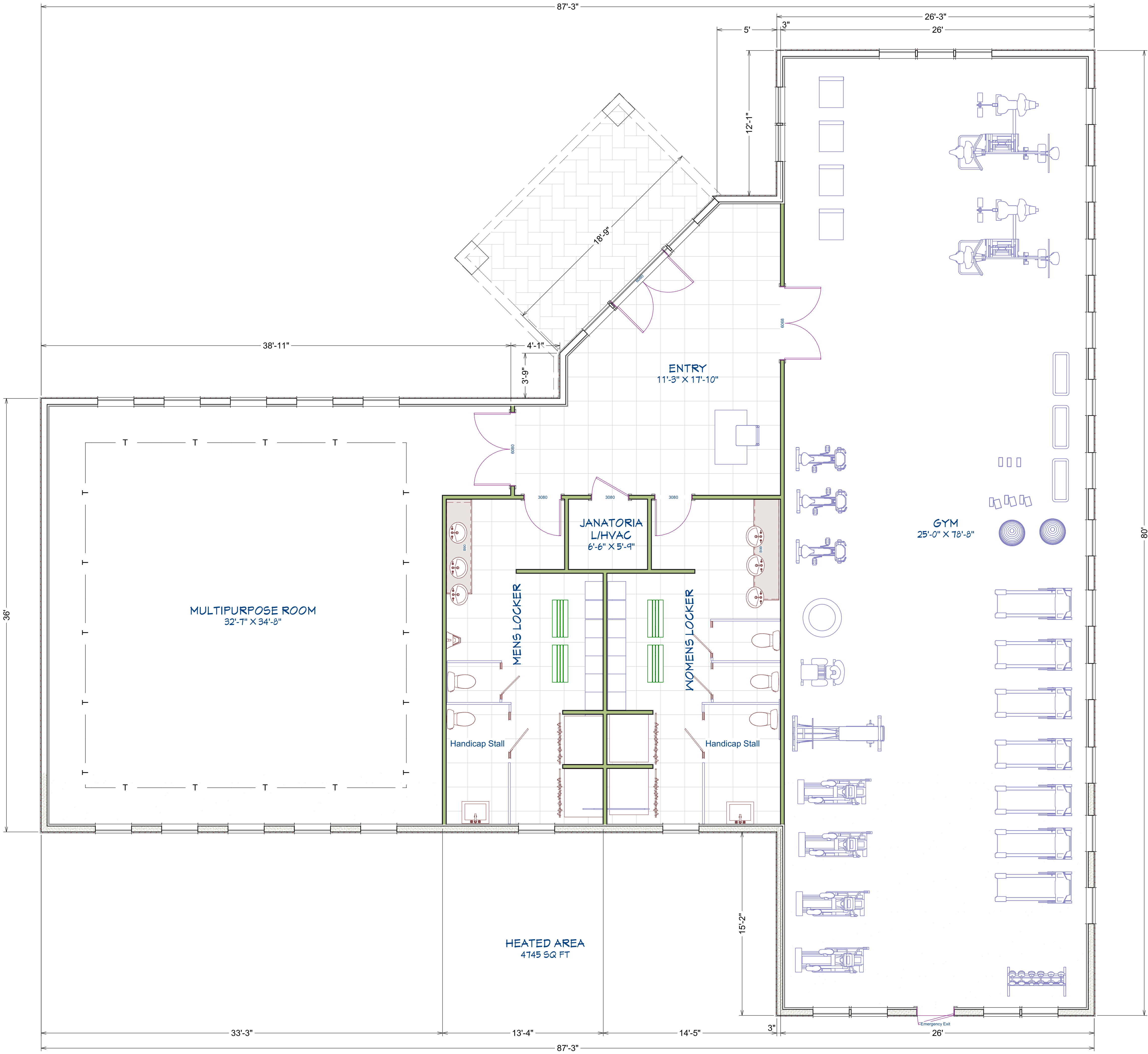
GYM RUBBER TILES



24\"X24\" PORCELAIN TILE



PAVERS



Option #3 - 1st Floor Plan

DESIGN BY:



KHPDEVELOPERS

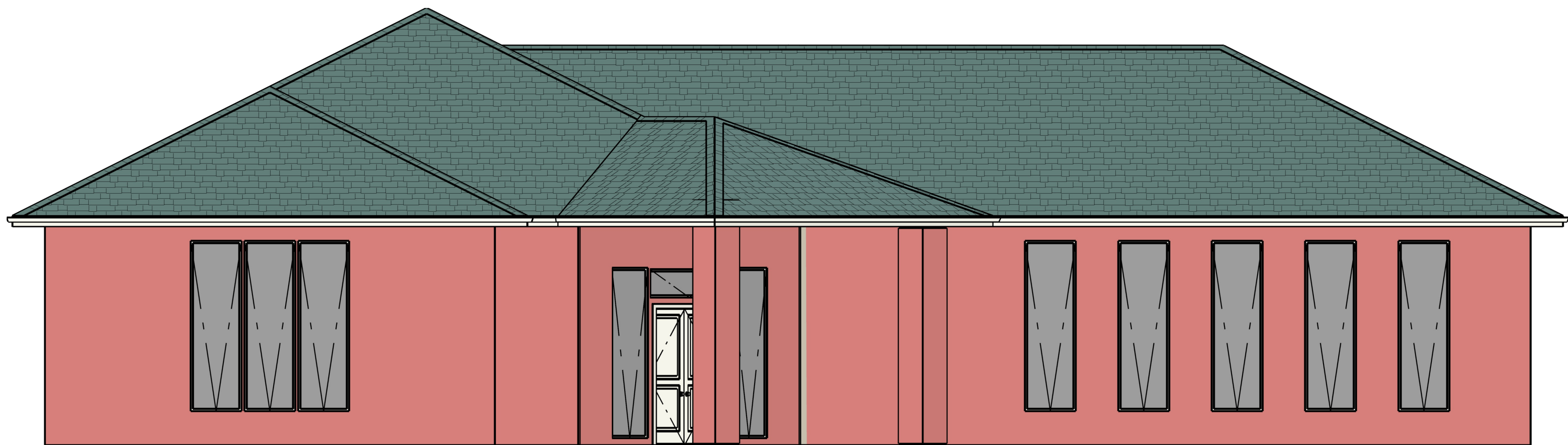
CGC # 1523047
P: 813-421-5678
F: 813-333-7296
kp@khpdevelopers.com
www.khphomes.com

THESE DRAWINGS ARE THE PROPRIETARY WORK PRODUCT AND PROPERTY OF KHP DEVELOPERS INC. DEVELOPED FOR THE EXCLUSIVE USE OF KHP DEVELOPERS INC. USE OF THESE DRAWINGS AND CONCEPTS CONTAINED THEREIN WITHOUT WRITTEN PERMISSION IS PROHIBITED. PROTECTED COPYRIGHT 2017 KHP DEVELOPERS INC.

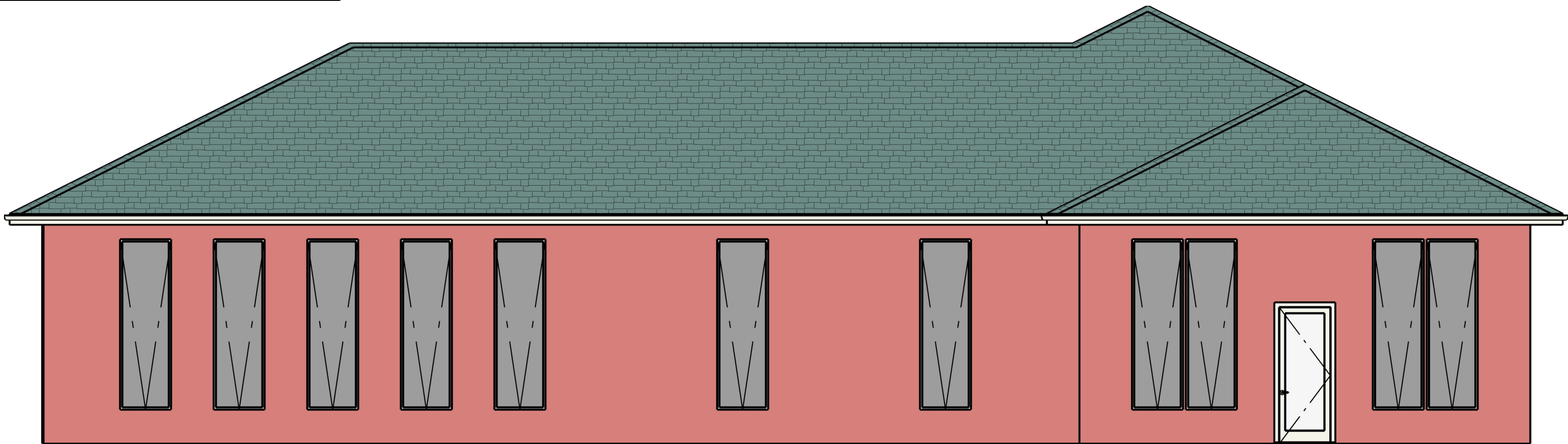
ENGINEERED BY:

CORY LAKE ISLES GYM & MULTI-PURPOSE ROOM
3 DIFFERENT LAYOUT OPTIONS
CORY LAKE ISLES, HILLSBOROUGH COUNTY, FLORIDA

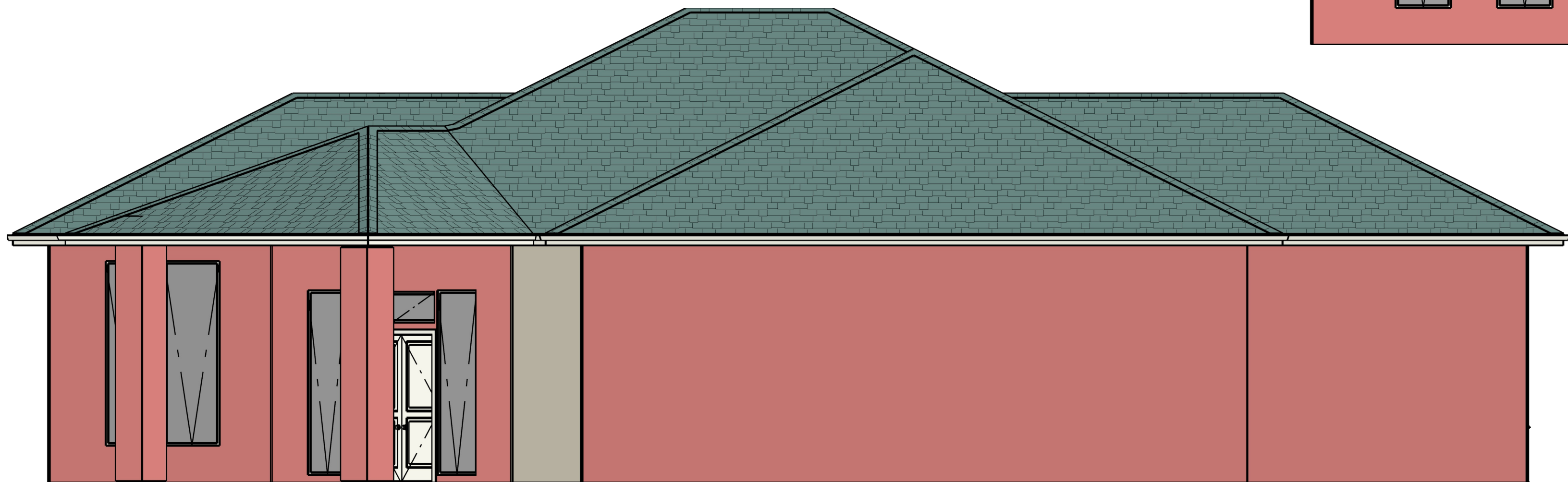
DRAWN BY: DCB
DATE: 04/06/2017
SCALE: N.T.S.
PAGE NUMBER:



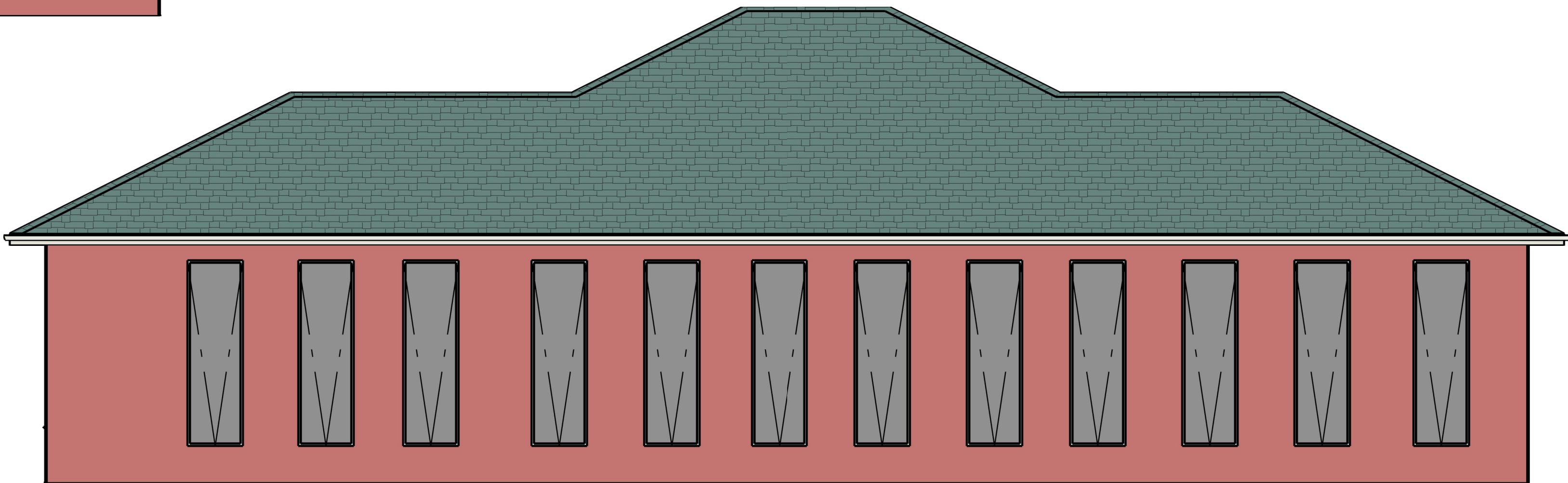
Option #3 - Exterior Elevation Front Side



Option #3 - Exterior Rear Side Elevation



Option #3 - Exterior Elevation Left Side



Option #3 - Exterior Elevation Right Side

DESIGN BY:



KHPDEVELOPERS

CGC # 1523047
P: 813-421-5678
F: 813-333-7296
kp@khpdevelopers.com
www.khphomes.com

THESE DRAWINGS ARE THE PROPRIETARY WORK PRODUCT AND PROPERTY OF KHP DEVELOPERS INC. DEVELOPED FOR THE EXCLUSIVE USE OF KHP DEVELOPERS INC. USE OF THESE DRAWINGS AND CONCEPTS CONTAINED THEREIN WITHOUT WRITTEN PERMISSION IS PROHIBITED. PROTECTED COPYRIGHT 2017 KHP DEVELOPERS INC.

ENGINEERED BY:

CORY LAKE ISLES GYM & MULTI-PURPOSE ROOM
3 DIFFERENT LAYOUT OPTIONS
CORY LAKE ISLES, HILLSBOROUGH COUNTY, FLORIDA

DRAWN BY: DCB

DATE: 04/06/2017

SCALE: N.T.S.

PAGE NUMBER: